

Woodlands edge

Community Association, Inc.

Woodlands Edge Recreation Area - The long awaited pool opened June 10, 2006!

New Trail Section

A new section of the hiking trail is about to be open. The trail runs from Eagle Talon Cove, across Windrush and Buckhorn, to the second circle. The recent heavy rains have damaged parts of this trail. The trail is being rebuilt at this present time.

The Pool will be open on Monday, July 3 for the 4th of July holiday.

The sidewalk running from Woodlands Trail all the way to the pool will be complete soon. Residents will be able to walk from anywhere in the community to the pool on pavement or trail.

Streetlights along Woodlands Trail will be up and working this week. Please be patient, they will be shining soon.

Many people contributed to the planning, construction and opening of our pool and clubhouse - most of whom are Woodlands Edge residents.

Randy Stocks of Stocks-Mann Architects provided the architectural design for the Clubhouse.

Randy Wright of HRH Builders was the general contractor for the facility along with his partner, Bill Darby.

Grindley Pools built the pool.

Many, many thanks to Eric & Lori Holloway. Eric is the chairman of the pool committee and has been instrumental in organizing and setting up the pool and clubhouse facility. They have both put in many, many hours to make sure that the pool opening went smoothly. Lori selected the furniture for our clubhouse, and with the help of the activities committee, put together the



luau party. Thanks Holloway Family! We really appreciate all that you have done for your community!

Sheila Hudson worked tirelessly to secure the best life-guards for our pool. Many thanks, Sheila.

The pool committee has put in numerous hours helping set up policies and procedures for our pool and clubhouse. The other committee members are: Whitney Elmore, Larry May, Janet Perry, Mike Pierce, Louis Portlock and Rusty Wright.



Randy, Anne, Sarah and Matt Stocks



Randy Wright with his partner Bill Darby



Grindley Pools

Please Observe the Following:

- Greenspaces are for the enjoyment of all Woodlands Edge residents. DO NOT cut, plant or remove anything from the greenspaces. DO NOT dump anything or dig in the area. PLEASE familiarize yourself with these areas and the specific requirements.
- Four-wheelers are not permitted on the trails in Woodlands Edge. Trails are specifically designed for walking and biking. Please respect the area and the community restrictions.
- Storage buildings are not permitted on lots. This includes pre-fabricated or site-built. In some cases, an out building may be erected if it is high quality and resembles the home in styling, materials, color and proportion. These must be approved by the Architectural Control Committee.

MONTHLY BUNCO

Amy Magee needs at least two more people to start a bunco group, she would love to have 5 or 6. The group will play ONCE a month. If you are interested e-mail Amy at amymagee4727@comcast.net or you can reach her at 225-4727. You can choose to host the group at your home or at the clubhouse.



What Wildlife Have You Seen?

“Walking on the trails in Woodlands Edge and around the neighborhood, I have recently spotted a Whitetail doe and a yearling. The doe looks to be about two-years old, and the yearling is maybe 12 to 14 months old.” - Bo Dottley

The white-tailed deer is one of the most popular animals in Arkansas. Throughout history whitetail deer have been depended on for both food and shelter. With the help of state laws and at the request of hunters, there have been regulations enacted to help regulate and protect this species.

The conservation areas that we have here in Woodlands Edge, allow residents the opportunity to see whitetail deer living in the area. Here are some things to know about them.

What they look like:

Whitetail deer range in size according to sex. Bucks (males) can be anywhere from 140-200 lbs and does (females) will average 100-170 lbs. Adult deer stand about three feet tall from the ground to the shoulder. The deer coat is reddish-brown in the summer and replaced with a thicker brownish-gray in the winter. Fawns are reddish-brown with white spots.

Where they are found:

Whitetail deer inhabit open woodlands, brushlands, mixed pine and hardwoods, pine, forest edges and second growth areas. They are ideally suited to “edge” habitat. Edges are created where a natural or human-made habitat break occurs, as in going from woods to pasture. In Woodlands Edge, whitetail deer can be spotted in greenspaces and around the trails.

What they eat:

Whitetail deer are browsers and grazers. They eat twigs, buds and leaves, including greenbrier, poison ivy, wildflowers, honeysuckle and oak seedlings. They also eat acorns, fruits, corns and soybeans.

Wild Neighbors:

Some annual plants, such as impatiens, that are planted in yards are irresistible to deer. Deer feeding can be heightened or lessened by thoughtful landscape design that takes into consideration both the placement and type of plants that you have in your yard. The more natural the landscaping, the less likely the chance of attracting attention from deer. Native species of plants are more likely to tolerate deer and their feeding habits.

Few plants are fully deer resistant, but here are some plants that could be planted in yards and flower beds that are not at the top of the deer’s food chain:

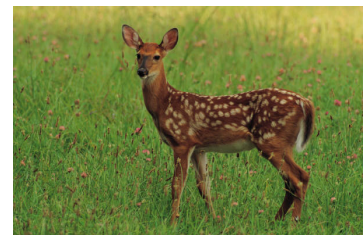
Shrubs: Blackberry (thorny only), Boxwood, Juniper, Lavender, Pampas Grass and Rosemary.

Perennial Succulents and Lilies: Cactus, Red Yucca, Yucca and the Carolina Jessamine.

Ground Covers: Spearmint and Thyme,

Flowers, Ferns, Herbs: Black-eyed Susan, Bluebonnet, Iris, Periwinkle and Zinnia.

To get more information on the habits of white-tailed deer in the local area, contact the Pulaski County Cooperative Extension Service at (501) 340-6650 or visit <http://plantanswers.tamu.edu/publications/deer.html>.



Above A fawn stands at attention in a field.

Neighborhood Committees & Neighborhood Events

Woodlands Edge is constantly growing. We now have around 200+ families who call our community home. We are always looking for more people to be involved. If you are interested in joining a committee, please contact the chairpersons listed.

Welcoming Committee

Claire Brown phone: (501) 224-4437
clairebrown@sbcglobal.net

Activities/Newsletter Committee

Activities Chair: Ashley Cliff
phone: (501) 224-0839
ashanne@hotmail.com

Newsletter Chair: Cortney Bowman
phone: (501) 224-0955
cortbowman@sbcglobal.net

Conservation & Upkeep Committee

Alan & Suzanne Strickland
phone: (501) 312-2526
astrick9@comcast.net

Pool Committee

Eric Holloway phone: (501) 227-5099
eholloway3@sbcglobal.net

Tennis Court & Recreation Area

Cindy Walker phone: (501)223-4456
holatennis@aol.com

Trails Committee

Bo Dottley phone: (501) 312-0252
capitalpestcontrol@sbcglobal.net

NEIGHBORHOOD EVENTS:

- September 25 - preparation for Halloween Carnival, Clubhouse, 6 p.m.
- October 15 - Fall Nature Trail Walk
- October 28 - Halloween Carnival
November 6 - preparation for Christmas Party, Clubhouse, 6 p.m.
- December 2 - Christmas Party

- December 17 - judging for Deck the Yard Contest

Details concerning these events will be announced at later dates. Information will be posted at www.woodlandsedge.com or you can call (501) 954-9816.



Woodlands Edge GARDEN CLUB:

Kristi Taunton is interested in forming a garden club in Woodlands Edge. If anyone is interested in joining, please contact Kristi at 223-5342 or ktaunton@gmail.com. Meetings will be held at the clubhouse.

MOM'S BIBLE STUDY:

Kristi is also interested in having a mom's bible study at the clubhouse. If you are interested, please contact her at 223-5342 or ktaunton@gmail.com.

Woodlands Edge Easter Egg Hunt

Easter Egg Hunt

The Woodlands Edge Activities Committee hosted the first ever Easter Egg Hunt in Woodlands Edge on April 8, 2006.

The "Hunt" took place in the field beside the pool and clubhouse, and between 75-100 people came. Thanks to all of those who helped make the event successful, and a special thanks to Claire Brown for being the Easter Bunny.

If you have any suggestions on how to improve the event for next year, e-mail Ashley Cliff at ashanne@hotmail.com.

Congratulations to the following winners from the Easter Egg Hunt.

Golden Egg Prize Winners:

Allison Schmit - 5 years old
Mason Cato - 9 years old

Silver Egg Prize Winners:

London Howell - 6 years old
Anne Yu - 10 years old

Enclosed in the newsletter are photos from

Neighborhood News

CONGRATULATIONS!

Here are a few of the latest arrivals in Woodlands Edge.

Christian & Sonia Allen welcomed Ava Greer on May 8, 2006. Ava Greer weighed 7 pounds and 6 ounces.

Brandon & Ashley Cliff welcomed Maddox Glenn Cliff in March. Maddox weighed 8 pounds and 6 ounces.

Patrick & Angela Neece welcomed Alex on

How to Reserve the Clubhouse

The clubhouse is available to reserve for any neighborhood function (bible study, committee meetings, scout groups) free of charge. For private affairs, such as birthday parties, family events, etc. the clubhouse may be reserved with a deposit of \$100.00 and a charge of \$25.00 per hour with a

minimum of two hours. Contact Janet Perry for pool and/or clubhouse reservations at (501) 217-9262 or cperryis@comcast.net.

Woodlands Edge Community Association, Inc.
2024 Arkansas Valley Drive, Suite 408
Little Rock, AR 72212

Meet Your **LIFEGUARDS**



Head Lifeguard
Scott Cross



Asst. Head Lifeguard
Natalie Etheridge



Travis Simmons



Holly Etheridge



Sam Hiatt



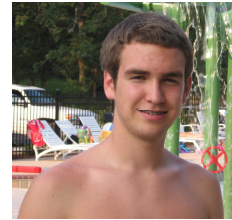
Ellie Lassiter



Taylor Simmons

Photo Unavailable

Hannah Smith



Robert Cole

Photo Unavailable

Ashlee Towns